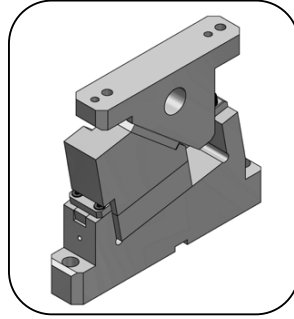
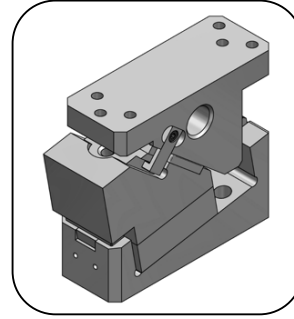


## General information



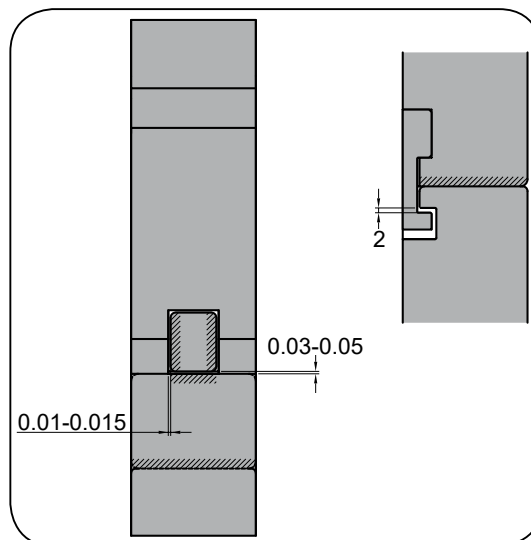
LSDH 0052



LSDH 0090

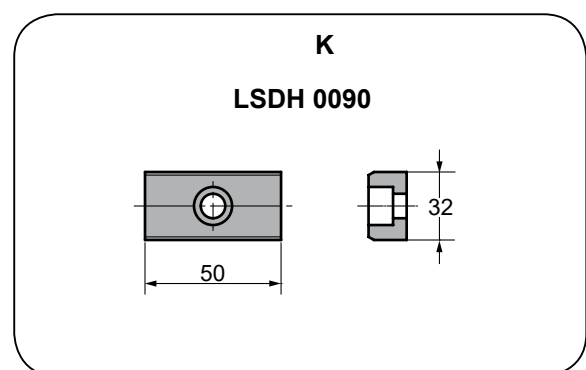
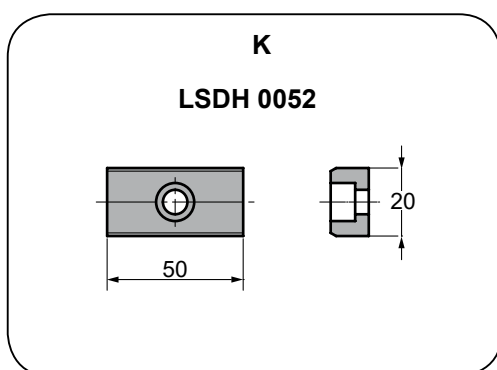
- Die mounted cam.
- Angles from 0° to 20° with increments of 5°. (0° to 15° for LSDH 90)
- Extensible mount length (only for LSDH 90).

## Adjustment clearances



LSDH 0052  
LSDH 0090

## Keys



# LSDH

Die mounted cam for pierce



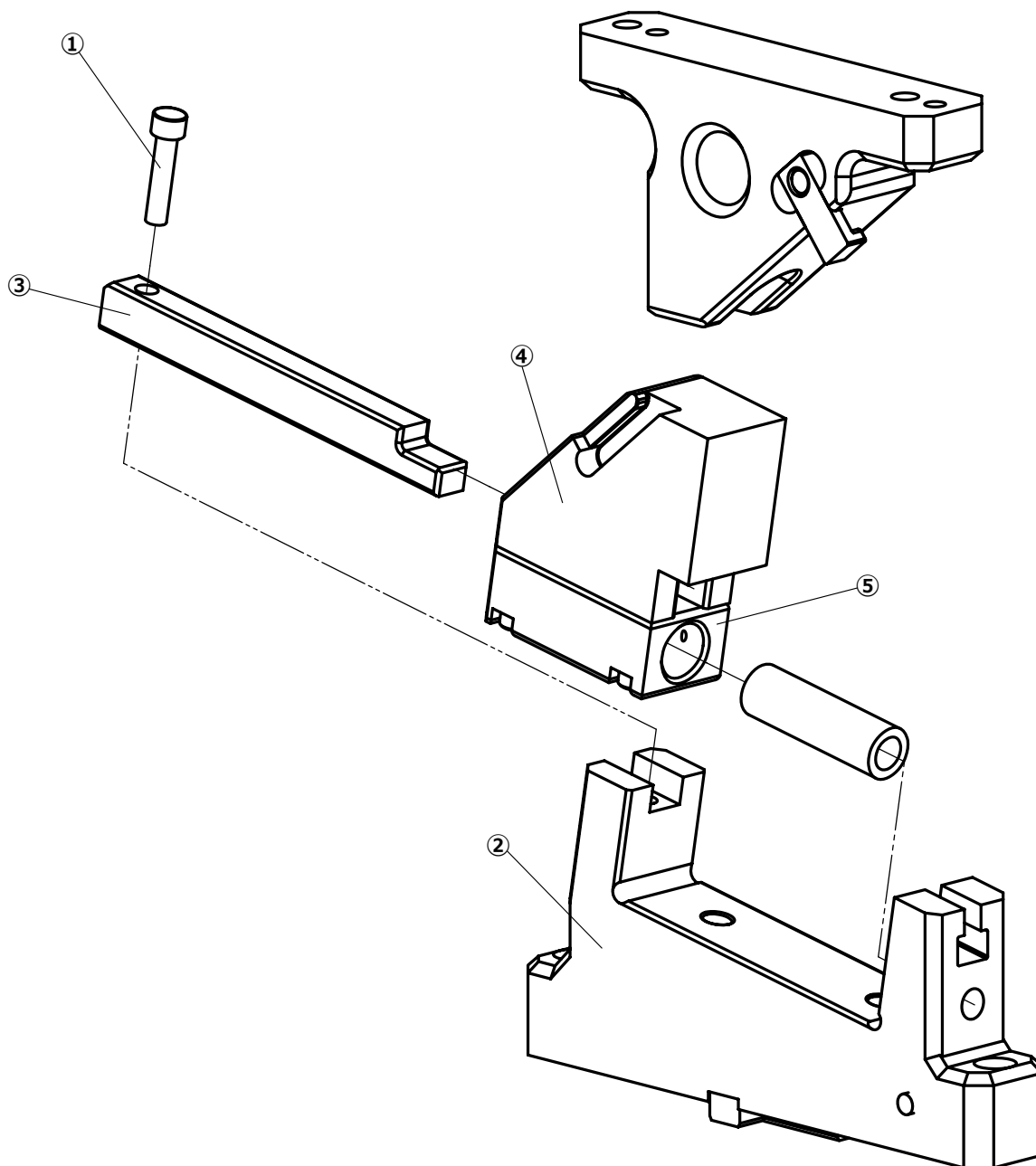
## Assembling and disassembling

### Disassembling process

- Unscrew ① pieces and remove ③ guide bar from cam holder ② pulling it 30mm back taking out the guide bar and the cam slider ③, ④, ⑤.
- Remove guide bar and cam slider.

### Assembling process

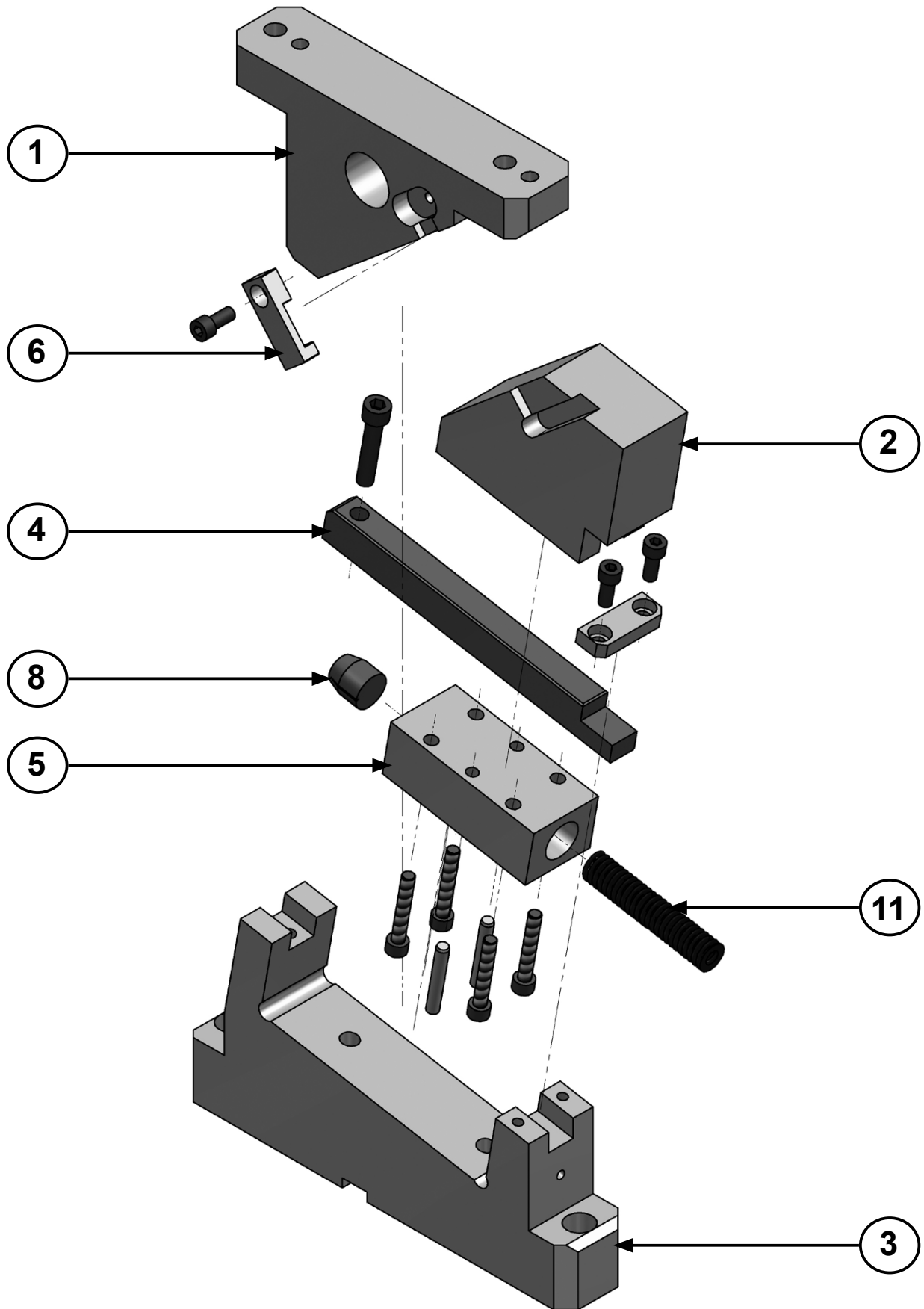
- Make sure that there are no metal shaving or impurities.
- The clearance between the cam holder and slider is controlled.
- Match the serial numbers marked in each part before assembly.
- Make sure that all the screws have been used.





# LSDH 0052

Die mounted cam for pierce

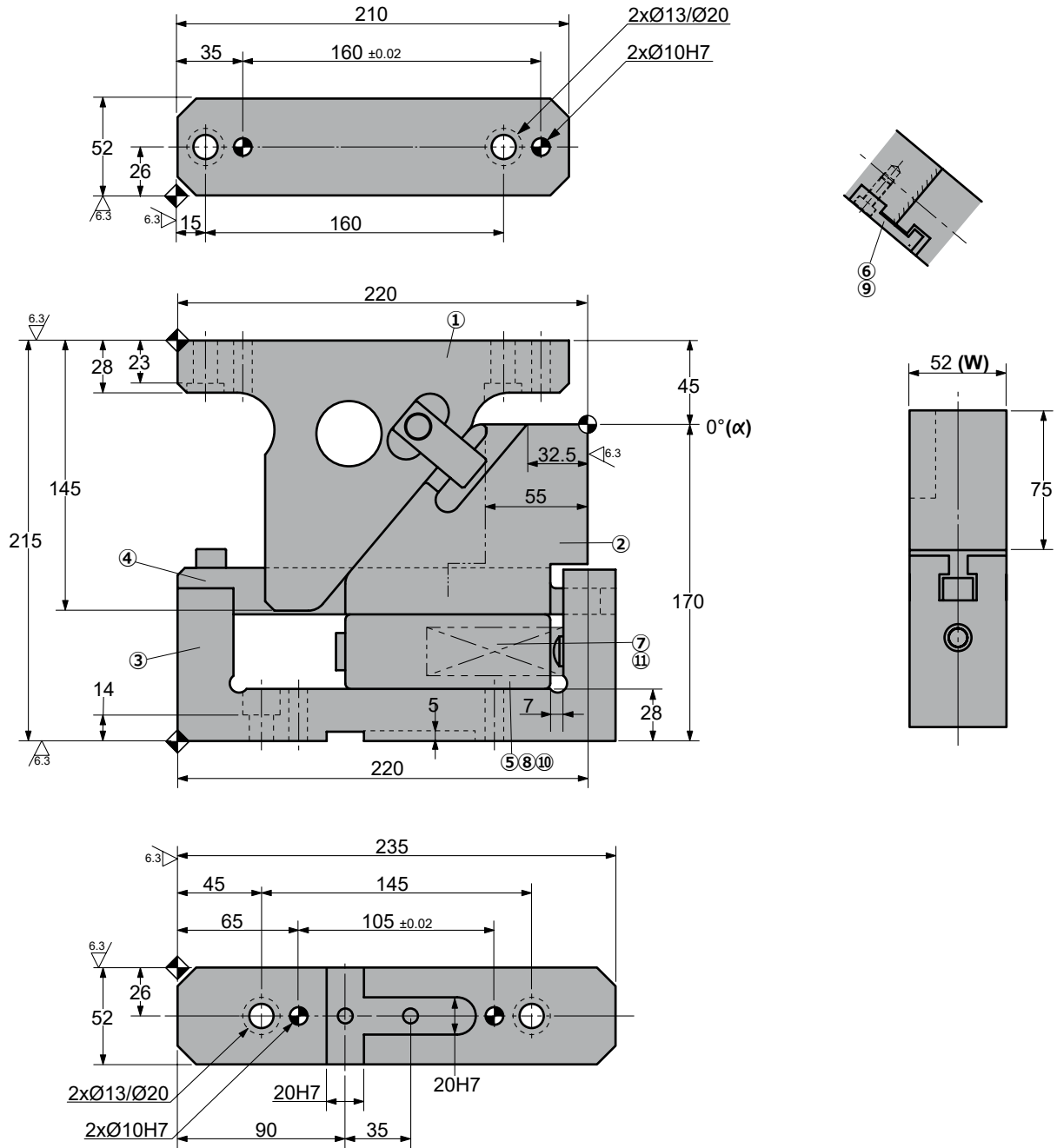


# LSDH 0052

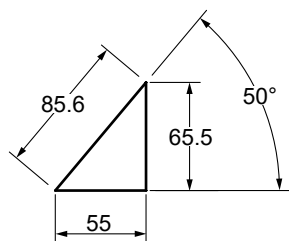
Die mounted cam for pierce



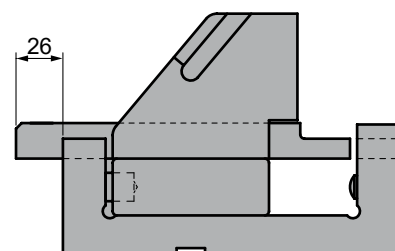
## LSDH 0052 00



### Cam diagram:



### Disassembling space:





# LSDH 0052

Die mounted cam for pierce

Stroke (mm)	Working force kN - (tons)		Spring Force N - (kgf)		Weight (Kg)	Model	W (mm)	$\alpha$ (mm)
	(1 Million Strokes)	(300.000 Strokes)	Initial F <sub>0</sub>	Final F <sub>1</sub>				
55	19.6 (2.0)	39.2 (4.0)	85.3 (8.7)	606.7 (62.1)	14.2	<b>LSDH</b>	<b>0052</b>	<b>00</b>



Order: Model (W) ( $\alpha$ )

**LSDH 0052 00**

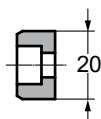
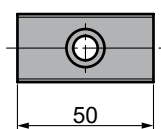
Standard order example according to catalog sheet. Add options applying options table contents.

## OPTIONS

**K**

**KEY**

**K**

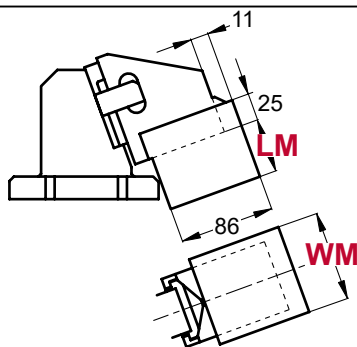


2 x M8x15

## LM - WM MOUNT

**LM** Extensible slider mount from 1 to 65 mm (increments of 1 mm). e.g. LM50

**WM** Mount width changed from 53mm to 100mm. (increments of 1 mm). e.g. WM100



Order Options: Model (W) ( $\alpha$ )-Option



**LSDH 0052 00-K**

**LSDH 0052 00-LM55-WM100**

**LSDH 0052 00-K-LM55-WM100**



**SPARE PARTS:**

Ⓘ Coil Spring

## COMPONENTS

No.	Description	Qty.	Material
①	Cam Driver	1	GG25 + G
②	Cam Slider	1	GGG50
③	Cam Holder	1	GGG50
④	Guide Bar	1	Bronze + G
⑤	Lower Cam Slider	1	CK45 + G
⑥	Positive Return	1	CK45
⑦	Spring Guide Pin	1	CK45
⑧	Stopper	1	Urethane
⑨	Screw	4	M8 x 50
⑩	Screw	1	LCS8 x 18
⑪	Coil Spring	1	SWS26-150





# LSDH 0052

Die mounted cam for pierce

Stroke (mm)	Working force kN - (tons)		Spring Force N - (kgf)		Weight (Kg)	Model	W (mm)	$\alpha$ (mm)
	(1 Million Strokes)	(300.000 Strokes)	Initial F <sub>0</sub>	Final F <sub>1</sub>				
55	19.6 (2.0)	39.2 (4.0)	85.3 (8.7)	606.7 (62.1)	18.5	LSDH	0052	05



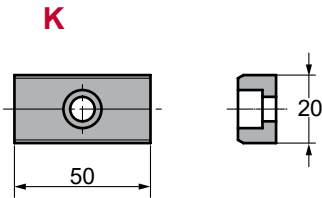
Order: Model (W) ( $\alpha$ )  
**LSDH 0052 05**

Standard order example according to catalog sheet. Add options applying options table contents.

## OPTIONS

**K**

**KEY**

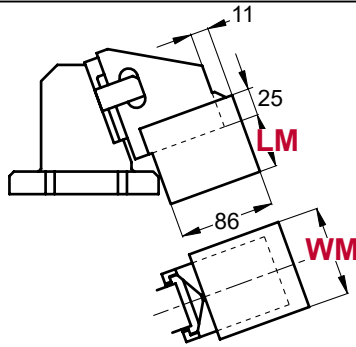


2 x M8x15

## LM - WM MOUNT

**LM** Extensible slider mount from 1 to 65 mm (increments of 1 mm). e.g. LM50

**WM** Mount width changed from 53mm to 100mm. (increments of 1 mm). e.g. WM100



Order Options: Model (W) ( $\alpha$ )-Option



**LSDH 0052 05-K**  
**LSDH 0052 05-LM55-WM100**  
**LSDH 0052 05-K-LM55-WM100**



**SPARE PARTS:**

Ⓘ Coil Spring

## COMPONENTS

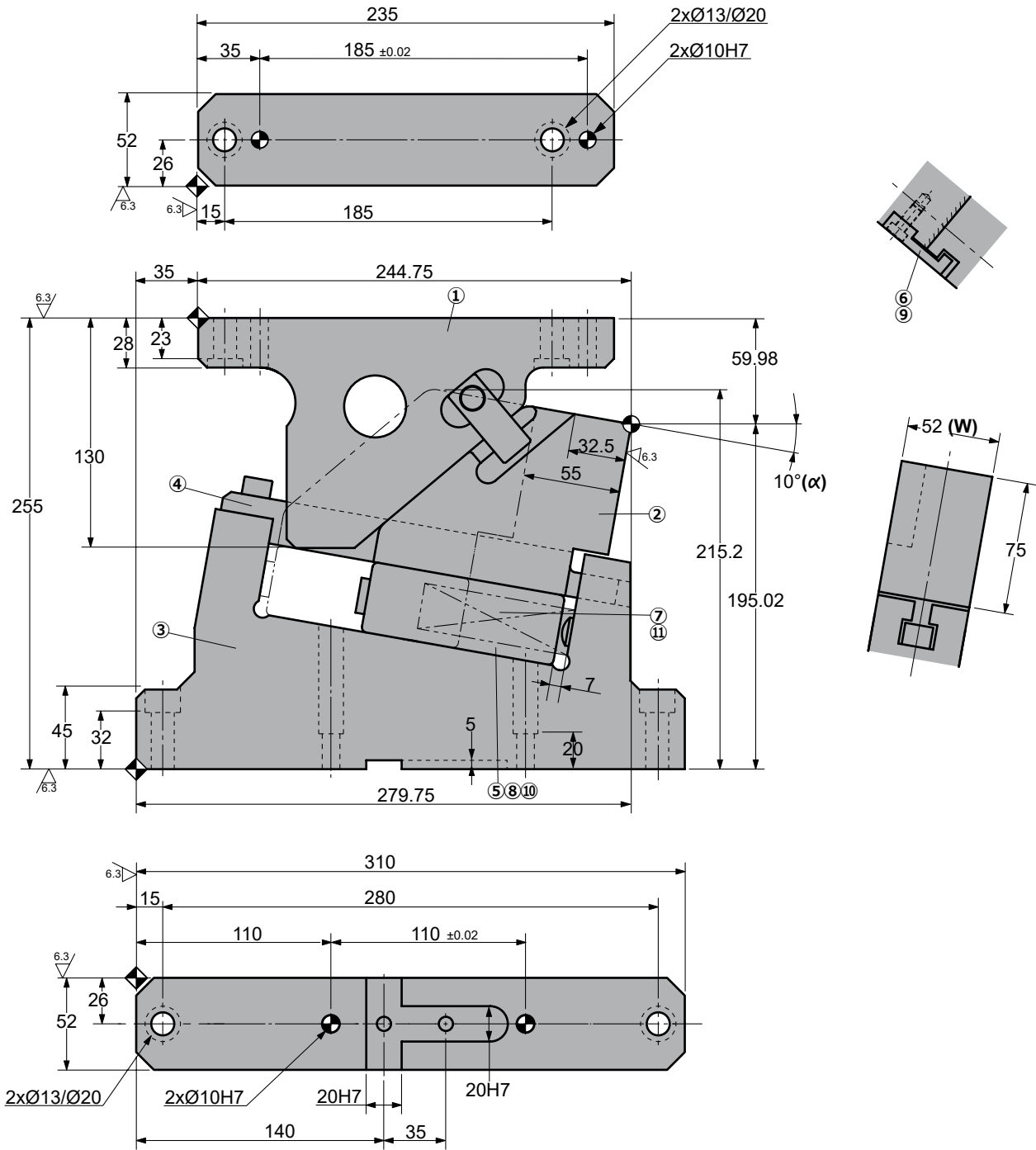
No.	Description	Qty.	Material
①	Cam Driver	1	GG25 + G
②	Cam Slider	1	GGG50
③	Cam Holder	1	GGG50
④	Guide Bar	1	Bronze + G
⑤	Lower Cam Slider	1	CK45 + G
⑥	Positive Return	1	CK45
⑦	Spring Guide Pin	1	CK45
⑧	Stopper	1	Urethane
⑨	Screw	4	M8 x 50
⑩	Screw	1	LCS8 x 18
⑪	Coil Spring	1	SWS26-150

# LSDH 0052

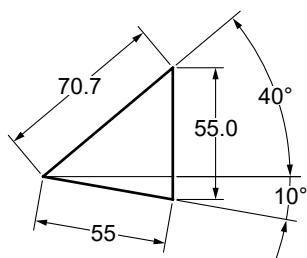
Die mounted cam for pierce



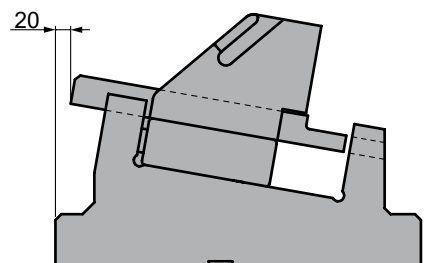
## LSDH 0052 10



### Cam diagram:



### Disassembling space:







# LSDH 0052

Die mounted cam for pierce

Stroke (mm)	Working force kN - (tons)		Spring Force N - (kgf)		Weight (Kg)	Model	W (mm)	$\alpha$ (mm)
	(1 Million Strokes)	(300.000 Strokes)	Initial F <sub>0</sub>	Final F <sub>1</sub>				
55	19.6 (2.0)	39.2 (4.0)	85.3 (8.7)	606.7 (62.1)	19.4	LSDH	0052	10



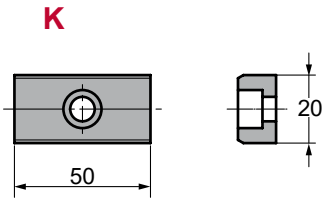
Order: Model (W) ( $\alpha$ )  
**LSDH 0052 10**

Standard order example according to catalog sheet. Add options applying options table contents.

## OPTIONS

**K**

**KEY**

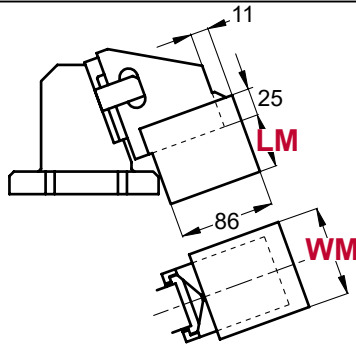


2 x M8x15

## LM - WM MOUNT

**LM** Extensible slider mount from 1 to 65 mm (increments of 1 mm). e.g. LM50

**WM** Mount width changed from 53mm to 100mm. (increments of 1 mm). e.g. WM100



Order Options: Model (W) ( $\alpha$ )-Option



**LSDH 0052 10-K**  
**LSDH 0052 10-LM55-WM100**  
**LSDH 0052 10-K-LM55-WM100**



**SPARE PARTS:**

Ⓘ Coil Spring

## COMPONENTS

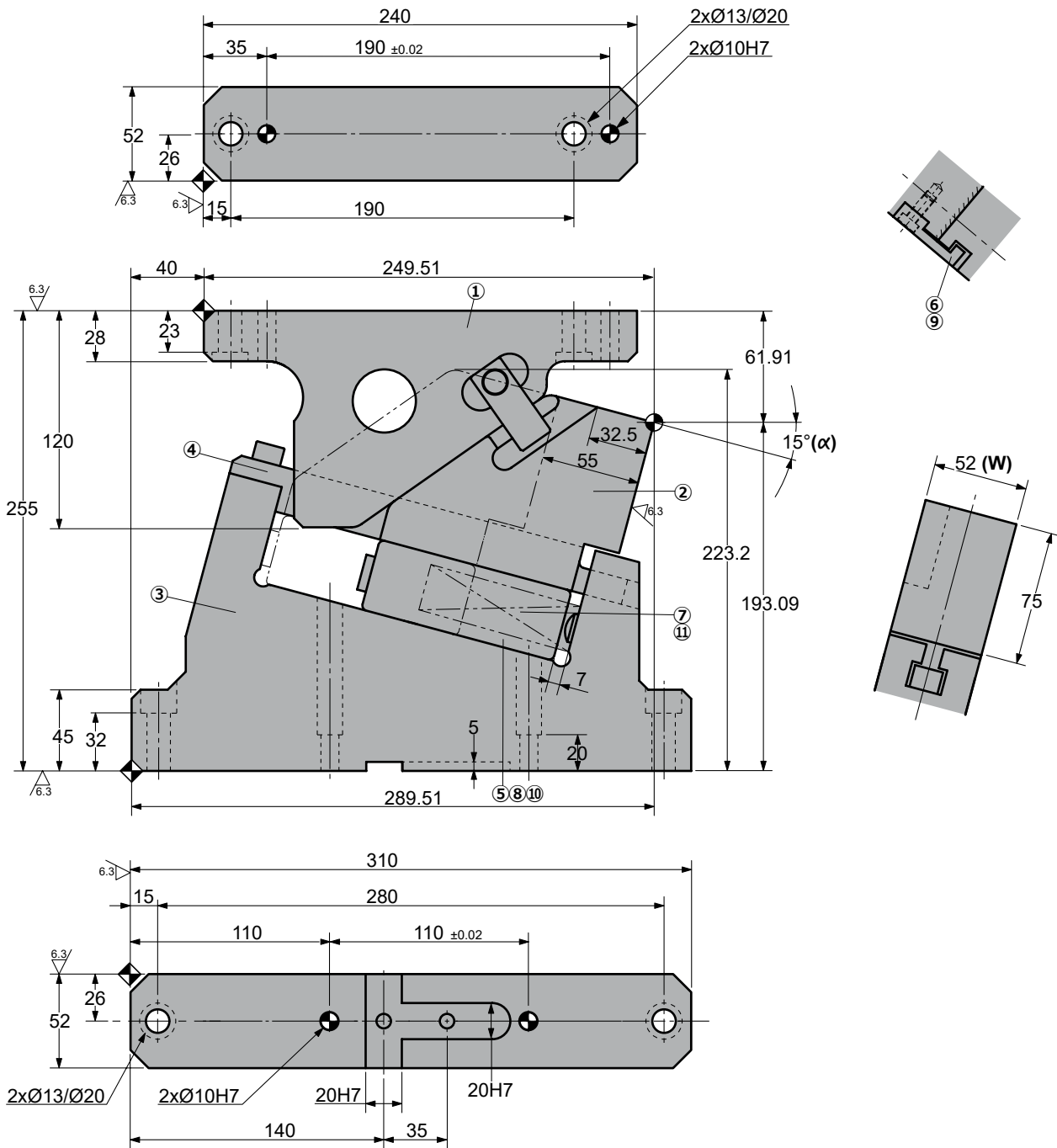
No.	Description	Qty.	Material
①	Cam Driver	1	GG25 + G
②	Cam Slider	1	GGG50
③	Cam Holder	1	GGG50
④	Guide Bar	1	Bronze + G
⑤	Lower Cam Slider	1	CK45 + G
⑥	Positive Return	1	CK45
⑦	Spring Guide Pin	1	CK45
⑧	Stopper	1	Urethane
⑨	Screw	4	M8 x 50
⑩	Screw	1	LCS8 x 18
⑪	Coil Spring	1	SWS26-150

# LSDH 0052

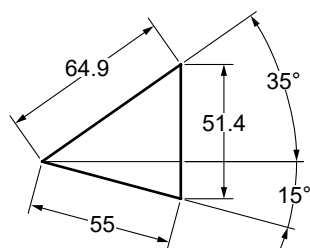
Die mounted cam for pierce



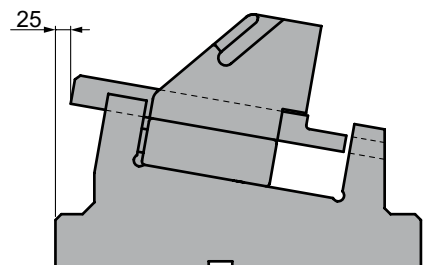
## LSDH 0052 15



◦Cam diagram:



◦Disassembling space:





# LSDH 0052

Die mounted cam for pierce

Stroke (mm)	Working force kN - (tons)		Spring Force N - (kgf)		Weight (Kg)	Model	W (mm)	$\alpha$ (mm)
	(1 Million Strokes)	(300.000 Strokes)	Initial F <sub>0</sub>	Final F <sub>1</sub>				
55	19.6 (2.0)	39.2 (4.0)	85.3 (8.7)	606.7 (62.1)	20.0	<b>LSDH</b>	<b>0052</b>	<b>15</b>



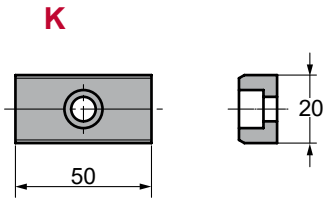
Order: **Model (W) ( $\alpha$ )**  
**LSDH 0052 15**

Standard order example according to catalog sheet. Add options applying options table contents.

## OPTIONS

**K**

**KEY**

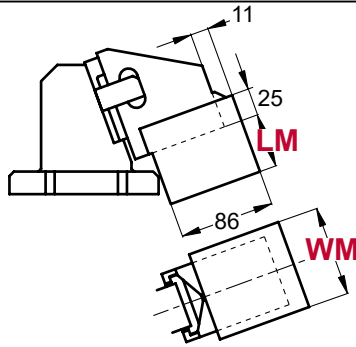


2 x M8x15

## LM - WM MOUNT

**LM** Extensible slider mount from 1 to 65 mm (increments of 1 mm). e.g. LM50

**WM** Mount width changed from 53mm to 100mm. (increments of 1 mm). e.g. WM100



Order Options: **Model (W) ( $\alpha$ )-Option**



**LSDH 0052 15-K**  
**LSDH 0052 15-LM55-WM100**  
**LSDH 0052 15-K-LM55-WM100**



**SPARE PARTS:**

Ⓘ Coil Spring

## COMPONENTS

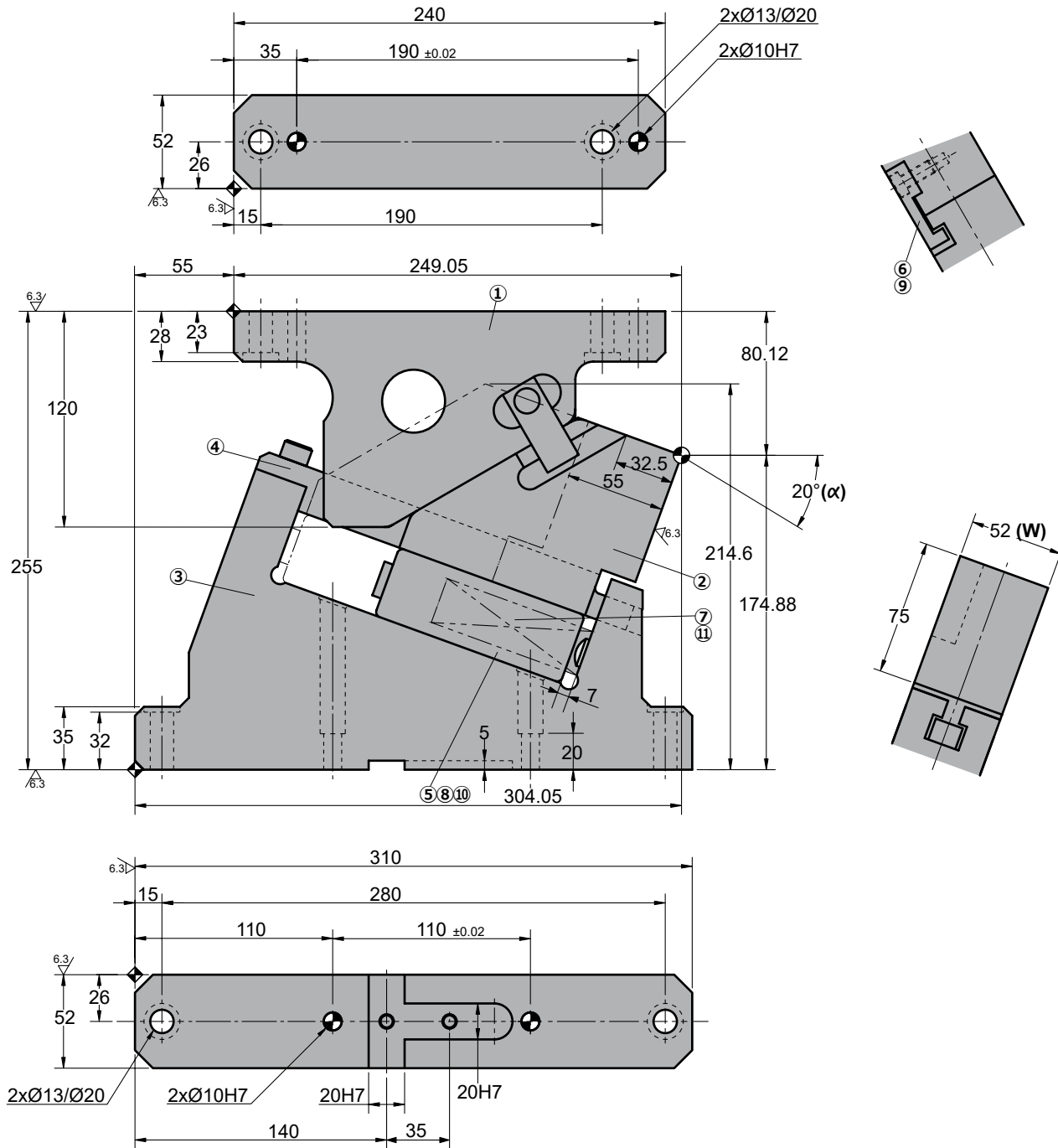
No.	Description	Qty.	Material
①	Cam Driver	1	GG25 + G
②	Cam Slider	1	GGG50
③	Cam Holder	1	GGG50
④	Guide Bar	1	Bronze + G
⑤	Lower Cam Slider	1	CK45 + G
⑥	Positive Return	1	CK45
⑦	Spring Guide Pin	1	CK45
⑧	Stopper	1	Urethane
⑨	Screw	4	M8 x 50
⑩	Screw	1	LCS8 x 18
⑪	Coil Spring	1	SWS26-150

# LSDH 0052

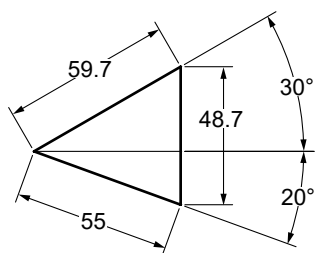
Die mounted cam for pierce



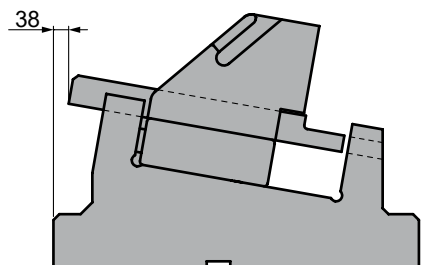
## LSDH 0052 20



### Cam diagram:



### Disassembling space:





# LSDH 0052

Die mounted cam for pierce

Stroke (mm)	Working force kN - (tons)		Spring Force N - (kgf)		Weight (Kg)	Model	W (mm)	$\alpha$ (mm)
	(1 Million Strokes)	(300.000 Strokes)	Initial F <sub>0</sub>	Final F <sub>1</sub>				
55	19.6 (2.0)	39.2 (4.0)	85.3 (8.7)	606.7 (62.1)	19.5	<b>LSDH</b>	<b>0052</b>	<b>20</b>



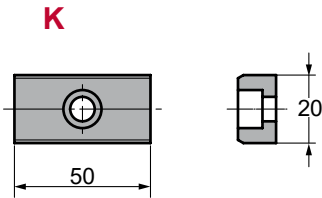
Order: Model (W) ( $\alpha$ )  
**LSDH 0052 20**

Standard order example according to catalog sheet. Add options applying options table contents.

## OPTIONS

**K**

**KEY**

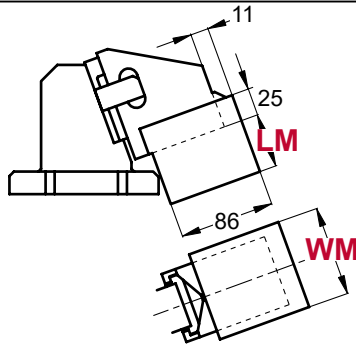


2 x M8x15

## LM - WM MOUNT

**LM** Extensible slider mount from 1 to 65 mm (increments of 1 mm). e.g. LM50

**WM** Mount width changed from 53mm to 100mm. (increments of 1 mm). e.g. WM100



Order Options: Model (W) ( $\alpha$ )-Option



**LSDH 0052 20-K**  
**LSDH 0052 20-LM55-WM100**  
**LSDH 0052 20-K-LM55-WM100**



**SPARE PARTS:**

Ⓘ Coil Spring

## COMPONENTS

No.	Description	Qty.	Material
①	Cam Driver	1	GG25 + G
②	Cam Slider	1	GGG50
③	Cam Holder	1	GGG50
④	Guide Bar	1	Bronze + G
⑤	Lower Cam Slider	1	CK45 + G
⑥	Positive Return	1	CK45
⑦	Spring Guide Pin	1	CK45
⑧	Stopper	1	Urethane
⑨	Screw	4	M8 x 50
⑩	Screw	1	LCS8 x 18
⑪	Coil Spring	1	SWS26-150

# LSDH 0052

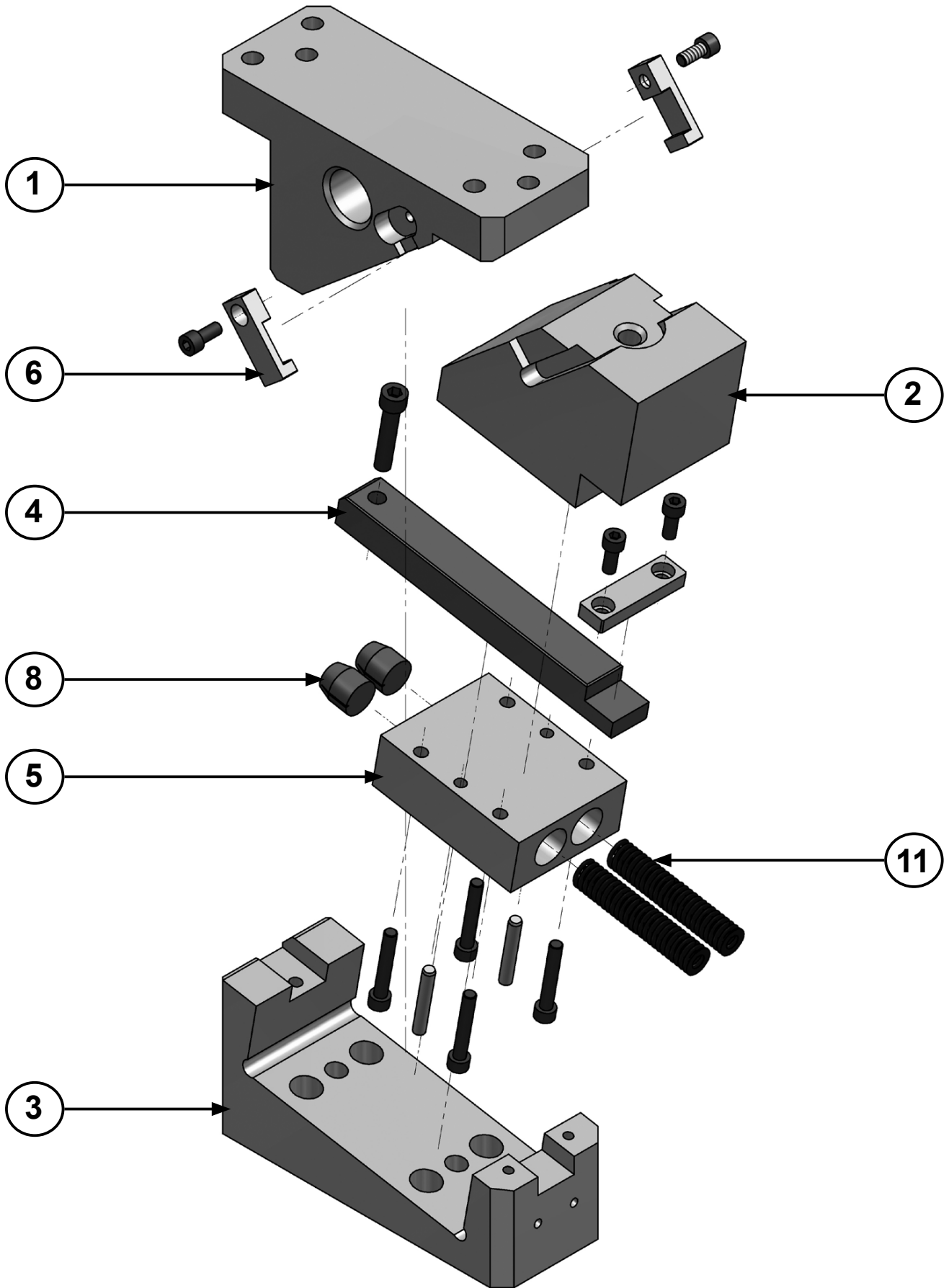


*Die mounted cam for pierce*



# LSDH 0090

Die mounted cam for pierce









# LSDH 0090

Die mounted cam for pierce

Stroke (mm)	Working force kN - (tons)		Spring Force N - (kgf)		Weight (Kg)	Model	W (mm)	$\alpha$ (mm)
	(1 Million Strokes)	(300.000 Strokes)	Initial F <sub>0</sub>	Final F <sub>1</sub>				
55	38.2 (3.9)	76.4 (7.8)	170.6 (17.5)	1213.4 (124.2)	24.9	LSDH	0090	00



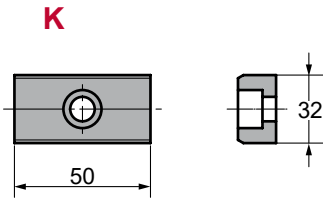
Order: Model (W) ( $\alpha$ )  
**LSDH 0090 00**

Standard order example according to catalog sheet. Add options applying options table contents.

## OPTIONS

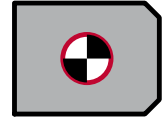
### K

### KEY



2 x M8x15

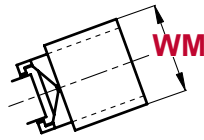
### P PINS



**P12** Pasadores a Ø12 H7

### WM MOUNT

**WM** Mount width changed from 91mm to 150 (increments of 1 mm). e.g. WM120



### Order Options: Model (W) ( $\alpha$ )-Option



**LSDH 0090 00-K**  
**LSDH 0090 00-P12**  
**LSDH 0090 00-WM120**  
**LSDH 0090 00-WM120-K**



### SPARE PARTS:

Ⓘ Coil Spring

## COMPONENTS

No.	Description	Qty.	Material
①	Cam Driver	1	GG25 + G
②	Cam Slider	1	GGG50
③	Cam Holder	1	GGG50
④	Guide Bar	1	Bronze + G
⑤	Lower Cam Slider	1	GGG50 + G
⑥	Positive Return	2	CK45
⑦	Spring Guide Pin	2	CK45
⑧	Stopper	2	Urethane
⑨	Screw	4	M10 x 50
⑩	Screw	2	LCS8 x 18
⑪	Coil Spring	2	SWS26-150





# LSDH 0090

Die mounted cam for pierce

Stroke (mm)	Working force kN - (tons)		Spring Force N - (kgf)		Weight (Kg)	Model	W (mm)	$\alpha$ (mm)
	(1 Million Strokes)	(300.000 Strokes)	Initial F <sub>0</sub>	Final F <sub>1</sub>				
55	38.2 (3.9)	76.4 (7.8)	170.6 (17.5)	1213.4 (124.2)	25.9	LSDH	0090	05



Order: Model (W) ( $\alpha$ )

**LSDH 0090 05**

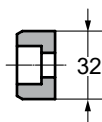
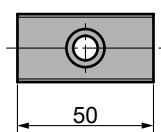
Standard order example according to catalog sheet. Add options applying options table contents.

## OPTIONS

**K**

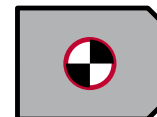
**KEY**

**K**



2 x M8x15

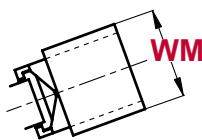
**P PINS**



**P12** Pasadores a Ø12 H7

**WM MOUNT**

**WM** Mount width changed from 91mm to 150 (increments of 1 mm). e.g. WM120



Order Options: Model (W) ( $\alpha$ )-Option



**LSDH 0090 05-K**

**LSDH 0090 05-P12**

**LSDH 0090 05-WM120**

**LSDH 0090 05-WM120-K**



**SPARE PARTS:**

⑪ Coil Spring

## COMPONENTS

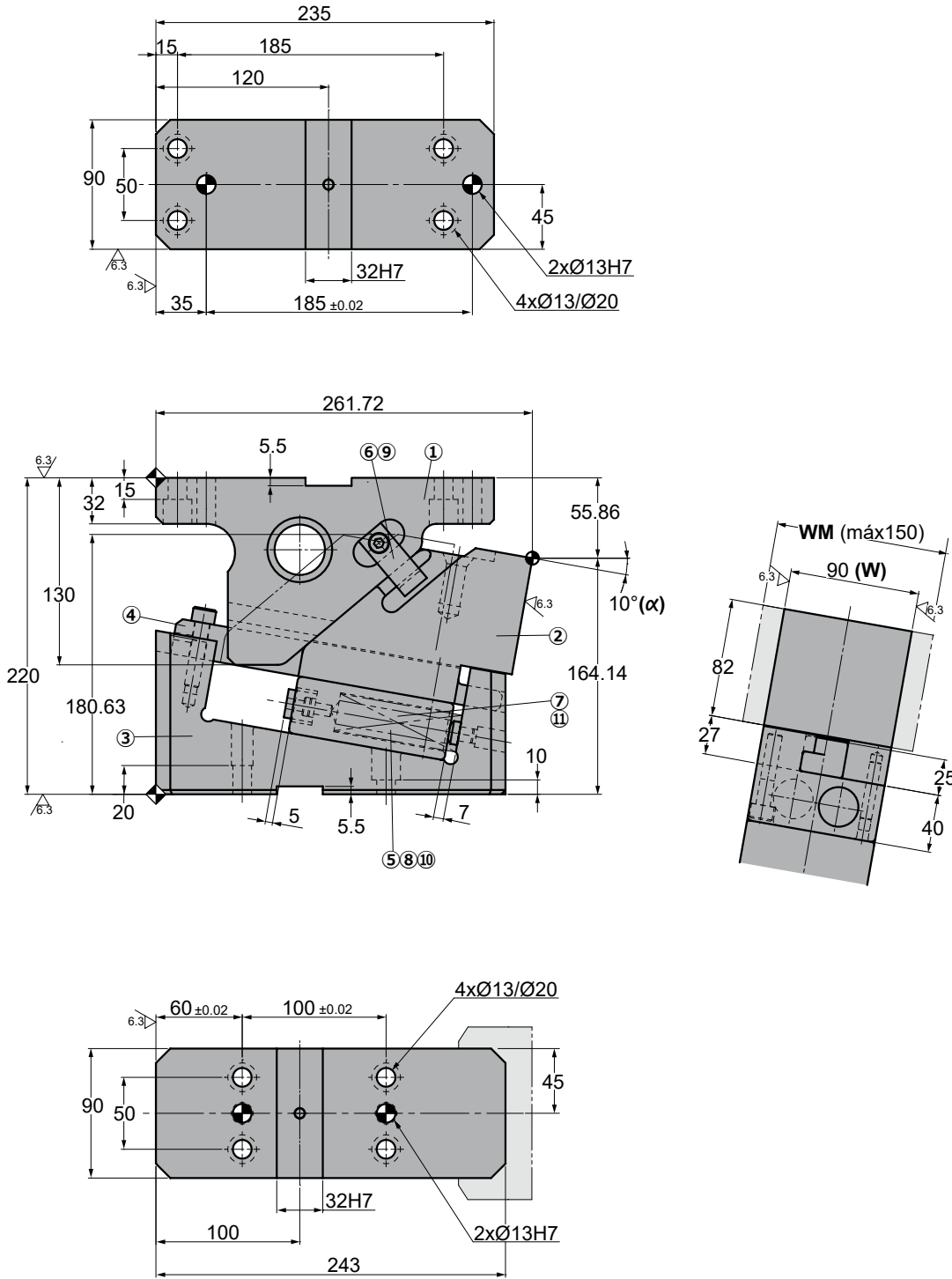
No.	Description	Qty.	Material
①	Cam Driver	1	GG25 + G
②	Cam Slider	1	GGG50
③	Cam Holder	1	GGG50
④	Guide Bar	1	Bronze + G
⑤	Lower Cam Slider	1	GGG50 + G
⑥	Positive Return	2	CK45
⑦	Spring Guide Pin	2	CK45
⑧	Stopper	2	Urethane
⑨	Screw	4	M10 x 50
⑩	Screw	2	LCS8 x 18
⑪	Coil Spring	2	SWS26-150

# LSDH 0090

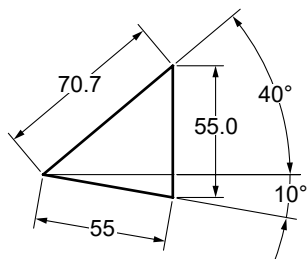
Die mounted cam for pierce



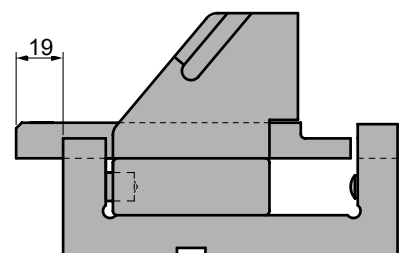
## LSDH 0090 10



◦Cam diagram:



◦Disassembling space:





# LSDH 0090

Die mounted cam for pierce

Stroke (mm)	Working force kN - (tons)		Spring Force N - (kgf)		Weight (Kg)	Model	W (mm)	$\alpha$ (mm)
	(1 Million Strokes)	(300.000 Strokes)	Initial F <sub>0</sub>	Final F <sub>1</sub>				
55	38.2 (3.9)	76.4 (7.8)	170.6 (17.5)	1213.4 (124.2)	27.3	LSDH	0090	10



Order: Model (W) ( $\alpha$ )

**LSDH 0090 10**

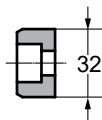
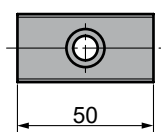
Standard order example according to catalog sheet. Add options applying options table contents.

## OPTIONS

**K**

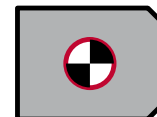
**KEY**

**K**



2 x M8x15

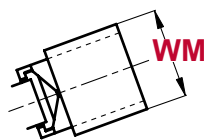
**P PINS**



**P12** Pasadores a Ø12 H7

**WM MOUNT**

**WM** Mount width changed from 91mm to 150 (increments of 1 mm). e.g. WM120



Order Options: Model (W) ( $\alpha$ )-Option



**LSDH 0090 10-K**

**LSDH 0090 10-P12**

**LSDH 0090 10-WM120**

**LSDH 0090 10-WM120-K**



**SPARE PARTS:**

Ⓘ Coil Spring

## COMPONENTS

No.	Description	Qty.	Material
①	Cam Driver	1	GG25 + G
②	Cam Slider	1	GGG50
③	Cam Holder	1	GGG50
④	Guide Bar	1	Bronze + G
⑤	Lower Cam Slider	1	GGG50 + G
⑥	Positive Return	2	CK45
⑦	Spring Guide Pin	2	CK45
⑧	Stopper	2	Urethane
⑨	Screw	4	M10 x 50
⑩	Screw	2	LCS8 x 18
⑪	Coil Spring	2	SWS26-150





# LSDH 0090

Die mounted cam for pierce

Stroke (mm)	Working force kN - (tons)		Spring Force N - (kgf)		Weight (Kg)	Model	W (mm)	$\alpha$ (mm)
	(1 Million Strokes)	(300.000 Strokes)	Initial F <sub>0</sub>	Final F <sub>1</sub>				
55	38.2 (3.9)	76.4 (7.8)	170.6 (17.5)	1213.4 (124.2)	29.3	LSDH	0090	15



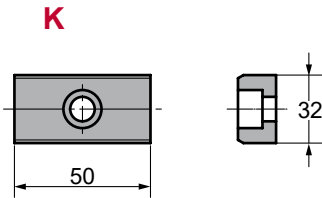
Order: Model (W) ( $\alpha$ )  
**LSDH 0090 15**

Standard order example according to catalog sheet. Add options applying options table contents.

## OPTIONS

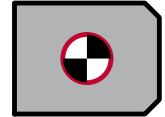
### K

### KEY



2 x M8x15

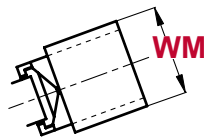
### P PINS



**P12** Pasadores a Ø12 H7

### WM MOUNT

**WM** Mount width changed from 91mm to 150 (increments of 1 mm). e.g. WM120



### Order Options: Model (W) ( $\alpha$ )-Option



- LSDH 0090 15-K**
- LSDH 0090 15-P12**
- LSDH 0090 15-WM120**
- LSDH 0090 15-WM120-K**



### SPARE PARTS:

Ⓘ Coil Spring

## COMPONENTS

No.	Description	Qty.	Material
①	Cam Driver	1	GG25 + G
②	Cam Slider	1	GGG50
③	Cam Holder	1	GGG50
④	Guide Bar	1	Bronze + G
⑤	Lower Cam Slider	1	GGG50 + G
⑥	Positive Return	2	CK45
⑦	Spring Guide Pin	2	CK45
⑧	Stopper	2	Urethane
⑨	Screw	4	M10 x 50
⑩	Screw	2	LCS8 x 18
⑪	Coil Spring	2	SWS26-150

# LSDH 0090



*Die mounted cam for pierce*